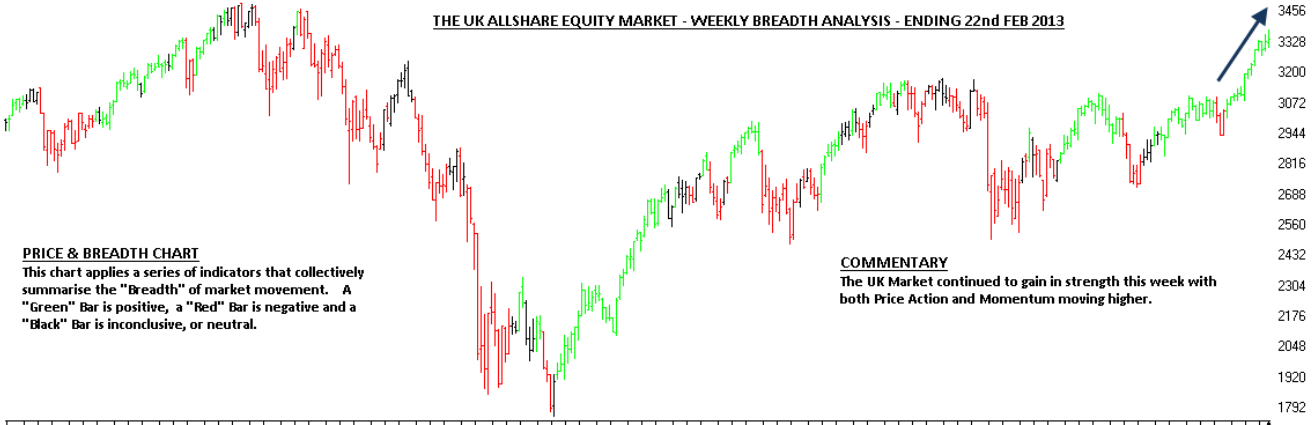


**THE UK ALLSHARE EQUITY MARKET - WEEKLY BREADTH ANALYSIS - ENDING 22nd FEB 2013**



**PRICE & BREADTH CHART**

This chart applies a series of indicators that collectively summarise the "Breadth" of market movement. A "Green" Bar is positive, a "Red" Bar is negative and a "Black" Bar is inconclusive, or neutral.

**COMMENTARY**

The UK Market continued to gain in strength this week with both Price Action and Momentum moving higher.



**MOMENTUM CHART**

Momentum continues to remain positive.